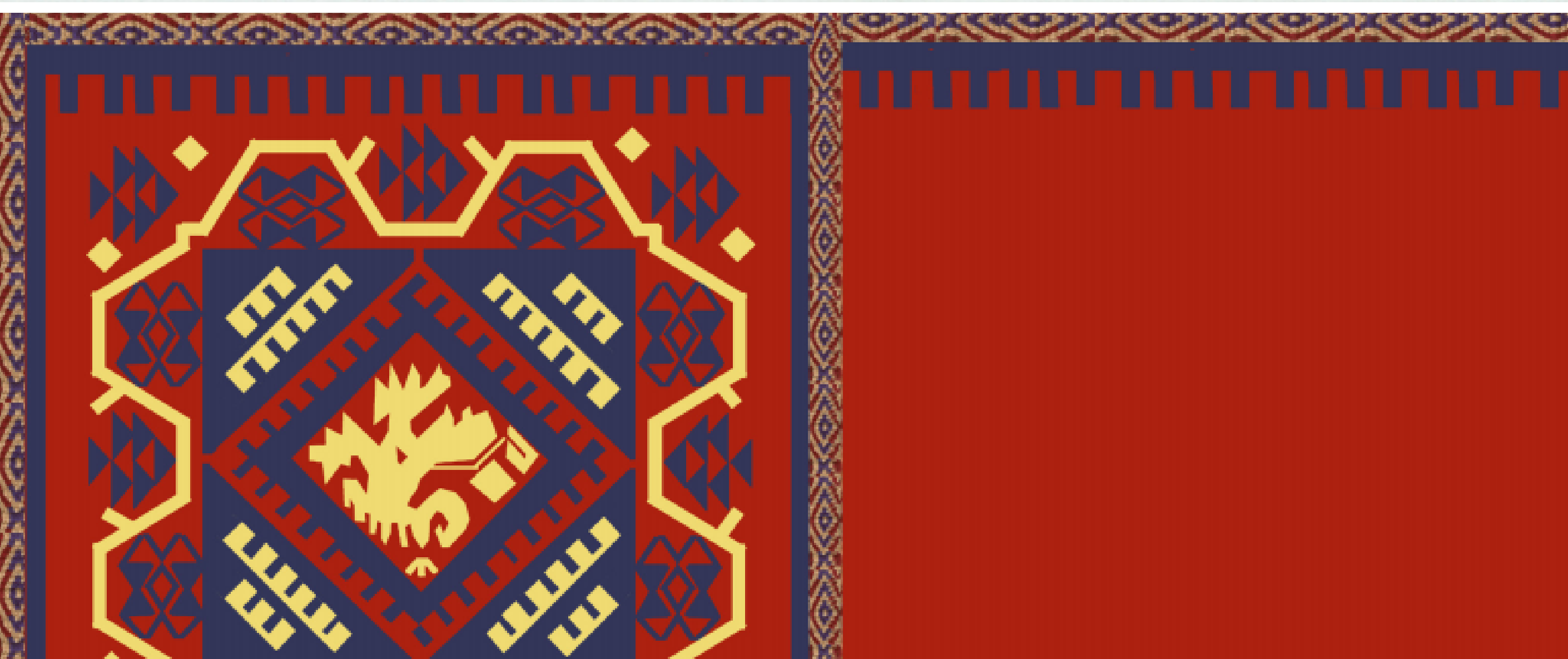


TABLET WOVEN BAND FROM SIEWIERZ

Decorative woollen edge (no. 446/71). Photo: 'Fourteenth-century textiles from the archaeological studies of Siewierz Castle', Ł. Antosik, A. Ginter, 2015



Visualisation of a saddlebag with a tablet woven edge. Photo: 'Textiles from Siewierz Castle. Analysis and reconstruction' (annex), M. Cybulska, T. Florczak, S. Kuberski, 2015

- Found in the Siewierz Castle (Silesia);
- Dated to the mid-fourteenth century;
- A fragment 7 x 2.2 cm long has been preserved;
- Woollen, made on 12 tablets;
- Dyed (red, blue-green, yellow-brown);
- Together with another fabric - decorative tapestry, it could be part of equestrian equipment - a harness, saddlecloth and saddlebag for the horse;
- It could have belonged to a Tatar warrior.

